

The Scribe

December 2025

Peace be with you this Advent season! Each Sunday when we pass the peace and share those words, it does my heart good. I love to walk into the congregation and receive peace from you and reciprocate it back. It is an important part of our order of worship, and, friends, we all need peace right now.

Around the world there are war-torn places and places that are threatened by rumors of war. There are people still recovering from natural disasters and too many homes where expenses outweigh paychecks. Even those of us who have stability in our external lives may struggle with addiction, relationship strains, family responsibilities, or some other pressure. Peace is needed in all of our lives.

So, it was an absolute delight to have Robyn and Ed Generali approach me recently and ask if the church might be interested in receiving a Peace Pole. I did some research and found out that a non-profit was formed in the 1970s by a Japanese man who began offering Peace Poles to businesses, local government properties, places of worship, and individual homes. Each pole carries the message “May peace prevail on Earth” in several different languages. To date, about 300,000 poles have been placed around the world, including 14 others here in Westerly in places such as The Elms, Rotary Park, Dunn’s Corners Elementary School, Paddy’s Beach Club, and Christ Episcopal Church.

I asked the session to weigh the idea, and they voted unanimously to accept the Generalis offer to donate a pole to the church. It has been placed in the upper parking lot and includes translations in English, Italian, Native American, and Scottish Gaelic.



But adding a Peace Pole is just the beginning. Andy and I have decided to dwell on and yearn for peace throughout Advent. We will pray for peace to prevail on Earth. We’ll pray for the Prince of Peace to come and rule over us all. We’ll pray for peace to come and soothe our own anxious hearts.

Between now and our two Christmas Eve services, let us all sing, “O come, o come, Emmanuel!” Let us prepare for the Prince of Peace, and may peace prevail on Earth!

Peace be with you, Pastor Gin Courtney

Dear Friends,

As we wrap up our annual Stewardship Campaign, we want to extend our heartfelt gratitude to everyone who participated, whether through a pledge, a one-time gift, or ongoing support. Your generosity and commitment are the foundation of our church's ability to serve, grow, and make a lasting difference in our community.

Stewardship Scorecard

Comparison - Giving Yr. 2026 vs. Giving Yr. 2025

As of 11/23/2025

Cards Received - 2026		Cards Received - 2025	
# of Cards	Dollar Amount	# of Cards	Dollar Amount
90	\$ 262,929.00	113	\$ 265,253.00

What do these numbers mean? This year, we received fewer giving cards compared to last year (90 vs. 113), but the average investment per household rose by about \$600. This increase reflects an even deeper commitment from those who pledged—thank you for stepping up and helping sustain our church's mission. Additionally, several households made one-time gifts, further demonstrating the breadth of support within our church family.

As we look around on Sundays, we're blessed to see more faces in our pews and a renewed sense of connection. While our attendance continues to grow, we recognize the financial impact of having lost several cherished long-time members, whose generous giving has shaped our legacy. Their absence is felt deeply, not only in our hearts but in our stewardship results—reminding us how each person's contribution truly makes a difference.

Our future shines brightly because of your faith, your generosity, and your willingness to invest in our shared journey. If you haven't yet returned your giving card, we warmly encourage you to do so—every gift matters, and together, we are building something truly special.

As a gentle reminder, if you still have a giving card, you can bring it any Sunday and drop it in the collection plate, mail it to the church office, or communicate your intentions by phone or email to the office.

Thank you for your steadfast support. May God bless you and guide us all as we continue to grow and serve.

With appreciation,
The Stewardship Committee



From the Session

The November meeting of the church's Ruling Elders was primarily focused on balancing our big dreams with our current resources. DCCCP is such a caring and active community church. We want to address so many needs – internal and external, but of course, we have to make choices with the resources and responsibilities we have. The conversation was mature, compassionate, and hopeful. And we want to be transparent with you. Despite increased attendance and the steps we have taken to reduce expenses this year, we are projecting a deficit for 2025 of about \$30,000 and spent much of the night making hard decisions about how to minimize the impact of this year's deficit on our church's funds by reining back some desires for 2026.

This is not a criticism of our congregation's giving. The Stewardship committee has reported that nearly every household that gave in 2025 has increased their estimated giving for 2026, but we realize that, in the past few years, several of our largest donors have moved or passed away, and despite our growth, there is a gap in income.

Our dreams are still big. We will do all we can to share the love of Jesus, serve our neighbors, teach our children, and care for our members. We believe the church will continue to grow. Some things we have hoped for will become reality soon and others will wait for more resources.

We will continue to work with the trustees on balancing our 2026 budget, but for now, we simply want to say thank you for your participation in the life of the church, your generosity, and your trust in us.





MISSION COMMITTEE REPORT: The Mission committee has been lending support for several months to the street outreach program at the WARM Shelter in Westerly. Their outreach van makes the rounds of Washington County in search of vulnerable, unhoused folk who are hidden from sight, camped out in the woods or other acute situations.

Using the Church's Mission funds, our Mission committee member Sandy Santy has been purchasing tarps and sleeping bags, and delivering them to the outreach worker for distribution. The outreach worker can then make contact, provide a sleeping bag, a tarp, and some food. WARM works to stay in touch and eventually provide housing and other services.

The WARM Shelter asks that if anyone sees someone who appears to be homeless, they call the mobile Street Outreach Case Manager directly at [401-932-5019](tel:401-932-5019), or the WARM Center at [401-596-9276](tel:401-596-9276).



Mission Soup Supper



Bazaar Recap

What a wonderful day we had at the bazaar. It takes a huge effort from everyone to deliver a successful bazaar and we did it!

On behalf of the bazaar committee, I would like to thank you for all your support and hard work. Please join us in January for our recap meeting.

Sincerely,
Christine and the bazaar committee





Free Community Christmas Dinner at **Dunn's Corners Community Church Presbyterian**

**221 Post Road, Westerly, RI
(Route 1 - Across from Evie's)**

Dine in or pick-up to take home & re-heat.

**11:30 a.m. to 1pm ~ or while supplies last
Christmas Day, Thursday, December 25th**

**Sign up in Fellowship Hall or
call the office at 322-0655
Please sign up by: Dec 17th**

Menu:

- Ham / Turkey with Gravy and Stuffing • Mashed Potatoes
- Green Bean Casserole, Peas and Corn • Rolls
- Pies and Christmas cookies

On November 2, the children shared their next worship arts activity, a dramatic reading of the story of the master giving his workers some gifts to share. The children reminded us that we are given gifts to share, even if we are scared or unsure, our gifts serve all of us better when we share them.



Our children and youth Sundays the third Sunday of the month continue to be a place where our young ones grow and share their gifts with us. From greeters, to readers, to ushers, to acolytes, and more. Each month we see more children becoming more comfortable being a part of the worship service.

Many members of the congregation have stepped up to share their gifts with the growing Children's Ministry Program. We continue to have 10-15 children each week for Sunday School, and now we have some volunteers to help us through until a new Children's Ministry Coordinator is appointed. We have a lot of fun each week. If you are interested, see Pastor Gin and she will find a way to use the gifts you can share.



Children's
Christmas Pageant
Sunday
December 14, 2025
During 10:00 AM service

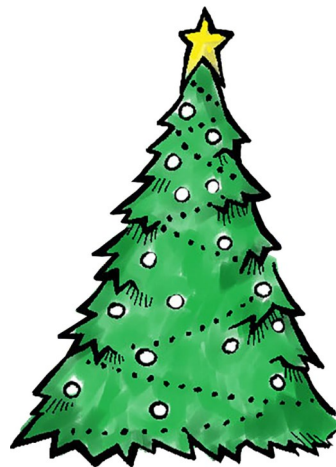
On November 23rd the "Angel Tree" was full of tags once again.

DCCCP uses the Angel Tree to support "Adopt a Family" run by the Jonnycake. Each tag represents a gift card to purchase a gift or gifts for a child. Also on the Tree will be gift cards for food.

Thank you for always supporting the "Angel Tree". We will put a basket for your gifts, including tags in the back of the church. You can also bring them to the church office.

Please return them by December 7th.

Deacons Jeanne Pietraallo, Bonnie Krauss



Dear Church Family,

The Worship & Music Committee is excited to revive our cherished tradition of luminarias for the Christmas Eve services. Luminarias—beautiful lanterns that line our walkways—are not only a warm, inviting welcome for our guests but also serve as cherished symbols of light and hospitality, illuminating the spirit of the holiday season. We're looking for volunteers to help prepare the luminarias immediately following the 10 am service on December 21st in the fellowship hall. All supplies—including flame-resistant bags, beach sand, and tea light candles—will be provided, so you only need to bring yourself and your holiday spirit! With a good group, the task should take no more than 30 minutes.

If you're able to help, please reply to Charles Jones at mst3dogs@gmail.com by December 15th so we can ensure we have enough hands. Your help will make a meaningful difference, and we would love for you to be part of this special tradition.

Let's light up Christmas Eve together!

Thank you so much for your support and enthusiasm!

Warmly,

Worship & Music Committee



Friday, December 12, 2025 at 7:00pm



Yes, the popular book is a movie!

Come see this inspiring and fun movie.
Rated PG. Great for the whole family.

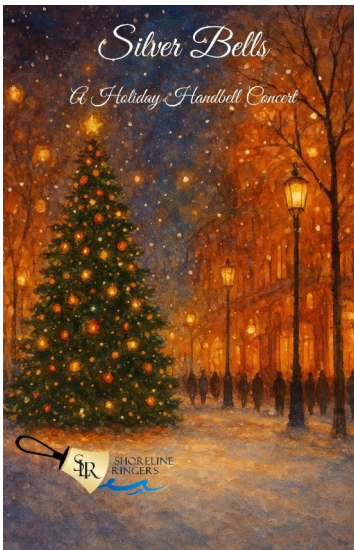
Tickets are \$10
15% off Concession food (does not include alcohol)

See Cathy Kellers for tickets



All-Church Caroling

Join your voices in singing some favorite carols on **Monday, December 8, at 6:00 pm**. We will meet in Fellowship Hall and then travel to Apple Clipper and then some members' homes. Dress for the weather as we will be outside for the caroling.



SHORELINE RINGERS CONCERT

Sunday, December 14 - 4:00pm
St. Paul Lutheran Church
56 Great Hammock Road, Old Saybrook, CT

Ring in the Holiday Season with "Silver Bells" a nostalgic holiday handbell concert presented by the Shoreline Ringers. This concert features popular holiday favorites, classic holiday tunes and original handbell compositions, performed by this top-level community handbell ensemble.

DUNN'S CORNERS

EARLY LEARNING CENTER & KIDKARE

The end of October was such a fun time for us. We hosted our third Trunk or Treat and the families outdid themselves with their themes and decorations. We thoroughly enjoyed seeing Nancy and Pastor Gin handing out candy in their costumes as well. We finished the month with our field trip to the Fire Station, Dunn's Corners Market, and Broadview. While at the fire station, a call came in so we got to witness how it all works and how the firefighters are so quick to respond and get on scene. We would like to thank the fire department, Dunn's Corners Market and Broadview for always welcoming us with open arms. The start to November has seen us focus on our 5 senses, our body parts, and food groups. We enjoyed finishing off our 5 senses unit with a taste test. We have conducted science experiments to see how our internal body parts work. We have also learned and categorized different food into groups. We will be hosting our dads on Friday 11/21 for a "Donuts with Dad" morning. We will be singing for them, reading a book, decorating donuts, giving them a craft gift, and enjoying time with them. We would like to thank Charles for always keeping our playground areas clean and ready to use. And of course, the Tuesday men who always check in on us asking if we need anything. We are looking forward to the holiday season!



CRIBBAGE AT DUNNS IS COMING BACK



Join us Fri, Jan 9th at 6pm for:
Cribbage and Pot Luck

All levels are welcome. Even if you have
never played and want to learn

Sign-up sheet in Fellowship Hall

OPEN TO EVERYONE AT THE CHURCH AND FRIENDS OF THE CHURCH

Any questions please contact Cathy Kellers: cmek313@earthlink.net



Sunday, December 7th
4 to 6pm

We will be creating
ornaments to decorate the
tree in fellowship hall and to
bring home.



**A supper of soup, salad, and
dessert will be served.**

**All are welcome to join us for
a fun and festive time!!**



PRESBYTERIAN WOMEN – CALISTA CIRCLE

Presbyterian Women is open to all women of the church.

PRESBYTERIAN
WOMEN

We have a lot of fun activities coming up:

Our December 15th meeting is our Christmas Party at NOON. There will be a luncheon and a Yankee Swap. Please bring a wrapped gift. It is always a fun time.

There was sign up for the Bible Study that will begin on Sat, Jan 10th at 10am. Meetings will be every other Saturday. Don't worry if you can't make it to all of them. They are not dependent on each other. The book study is entitled, "Finding Resilience, Joy, and Our Identity in Jesus Christ". The book cost is \$12. See Doreen Smith if you would like to attend.

Nancy Mayne has offered to teach a Qigong class for 30 minutes at the start of our January 19th meeting.

Soup Sale will be held Jan 25th. Each container will be sold for \$10. Containers will be able to be picked up Jan 11th and 18th. There will be allergen stickers on each container.

There is a Norwex party being planned for Sun, Feb 15th at 11:30am. Norwex sells cleaning products that are environmentally friendly. This will be open to all.



There are no neat, orderly stages of grief, but GriefShare ministry offers helpful ways of coping through the loss of a loved one, and a safe space in which grieving individuals find a community of support. GriefShare is a 13-week program in which participants discover what to expect in the face of losing a loved one.

We will be starting a new GriefShare 13-week group on Tuesday night beginning February 3rd from 5:30 - 7:00PM in the Sanctuary. You are welcome to join GriefShare at any point in the program.

If you are interested in signing up or have questions, please contact Marilyn Brandyberry at mebrandyberry@gmail.com or (401) 662-3926.

DEACONS Corner

Deacons who are faithfully serving the congregation are:

Sue Eldridge, Stephanie Cahoon, Karen Ingalls, Bonnie Krauss, Sam Pierson, Jeanne Pietraallo, Stacey Pride, Cheryl Remsbecker, Sandy Santy, Doreen Smith, Cheryl Spino, and Susan Strouse.

The deacons of DCCCP are busy helping people and groups in the congregation and the larger community. Our deacons are currently involved in many activities, and we invite you to join us in our endeavors. Deacons continue to seek ways to grow as a community where God's love and kindness are available for all. A few ongoing activities are highlighted below.

Warm Shelter Dinner: DCCCP members will serve the Swiss chicken dinner on **Saturday, December 6.** Volunteers are needed and there is a signup list next to the Warm Center food signup list in Fellowship Hall. This will take place on the first Saturday of each month from approximately 3:00 - 6:00. This includes heating, setup and serving the food - there is no cleanup required of the volunteers. The Warm Shelter address is 56 Spruce St in Westerly, RI. We are reaching out to the congregation to help support this ministry. If you have any questions, please contact Doreen at (401) 429-8969. Thank you.

Jonnycake: We continue to greatly appreciate all the donations received! As we turn to fall we could use the following items:

- Pet Food: Dog and Cat
- Kitty Litter
- Hygiene Supplies / Household Supplies
- Lunchbox Snacks / Cereal

Thank you for your support!

Food and Fellowship Ministry: As we all know, food and fellowship are important parts of DCCCP! Coffee hour, memorial collations, holiday dinners, and Diamond lunches are significant ways we can join together and share food and friendship inside and outside the congregation. We can help feed neighbors and involve the community in lifting our spirits and sharing our love. Thank you for signing up to provide refreshments for the congregation after church services. We appreciate cookies or coffee cake, cheese and crackers, or fruit and veggies--anything to snack on while enjoying coffee hour! Please note we place a small basket on the table for Donations. Whatever money we collect, we buy supplies for the kitchen such as coffee, tea, sugar, and juice. We do rely on these donations to make sure we have what we need each week for fellowship, and funds are currently low, so please contribute what you can to the basket. Thank you! If you have any questions, please see Jeanne Pietraallo or Sandy Santy.

Dunn's Corners Community Church,
Presbyterian
221 Post Road
Westerly, Rhode Island 02891

Non-Profit Organization
US Postage Paid Westerly, RI 02891
Permit No. 145

Return Service Requested



The Scribe
December 2025

Diamonds Among Us!

We extend our birthday wishes to:

🕯️ Patricia Churchill December 2

Diamonds (70 and beyond), please contact the Church Office at (401) 322-0655 or sign up on the bulletin board in Fellowship Hall and add your name to our list.



Young at Heart
Happy Birthday

Sunday	Monday	Tuesday	Wednesday	Thursday	Friday	Saturday
	1	2 8:30 am Work Team 4 pm Worship Committee (Z) 5 pm Christian Ed 5 - 7pm Teen Time (T) 6 pm Buildings and Grounds (M) 6-7:30 pm GriefShare (M)	3	4	5	6 8 am-2 pm Deacons collect meals for the WARM Center
7 2nd SUNDAY OF ADVENT Communion Sunday 8 am Worship 9 am Fellowship Hour 10 am Worship & Sunday School 11 am Fellowship Hour 4 pm Advent Workshop (FH)	8 6 pm All-Church Caroling 6 pm Trustees (FH) 7pm Presbyterian Women Book Club (M)	9 8:30 am Work Team 5 - 7pm Teen Time (T) 6-7:30 pm GriefShare (M) 7 pm Session (M)	10 1:30-3:30 pm Westerly Village (FH) 6-8 pm Cub Scouts (FH)	11 5:45-7 pm Glory Ringers 7-8:30 pm Chancel Choir	12 7pm United Theater	13
14 3rd SUNDAY OF ADVENT 8 am Worship 9 am Fellowship Hour 10 am Worship & Sunday School 11 am Fellowship Hour	15 12 pm Presbyterian Women Christmas Luncheon	16 8:30 am Work Team 5-7 pm Teen Time (T)	17 1:30-3:30 pm Westerly Village (FH) 6-8 pm Cub Scouts (FH)	18 5:45-7 pm Glory Ringers 7-8:30 pm Chancel Choir	19	20  First Day of Winter
21 4th SUNDAY OF ADVENT 8 am Worship 9 am Fellowship Hour 10 am Worship & Sunday School 11 am Fellowship Hour	22	23 8:30 am Work Team	24 5 pm Candlelight Service 10 pm Lessons & Carols Candlelight Service	25  <i>Christmas Day</i> 11:30-1pm Christmas Dinner	26	27
28 8 am Worship 9 am Fellowship Hour 10 am Worship & Sunday School 11 am Fellowship Hour	29	30 7pm Deacons (M)	31			